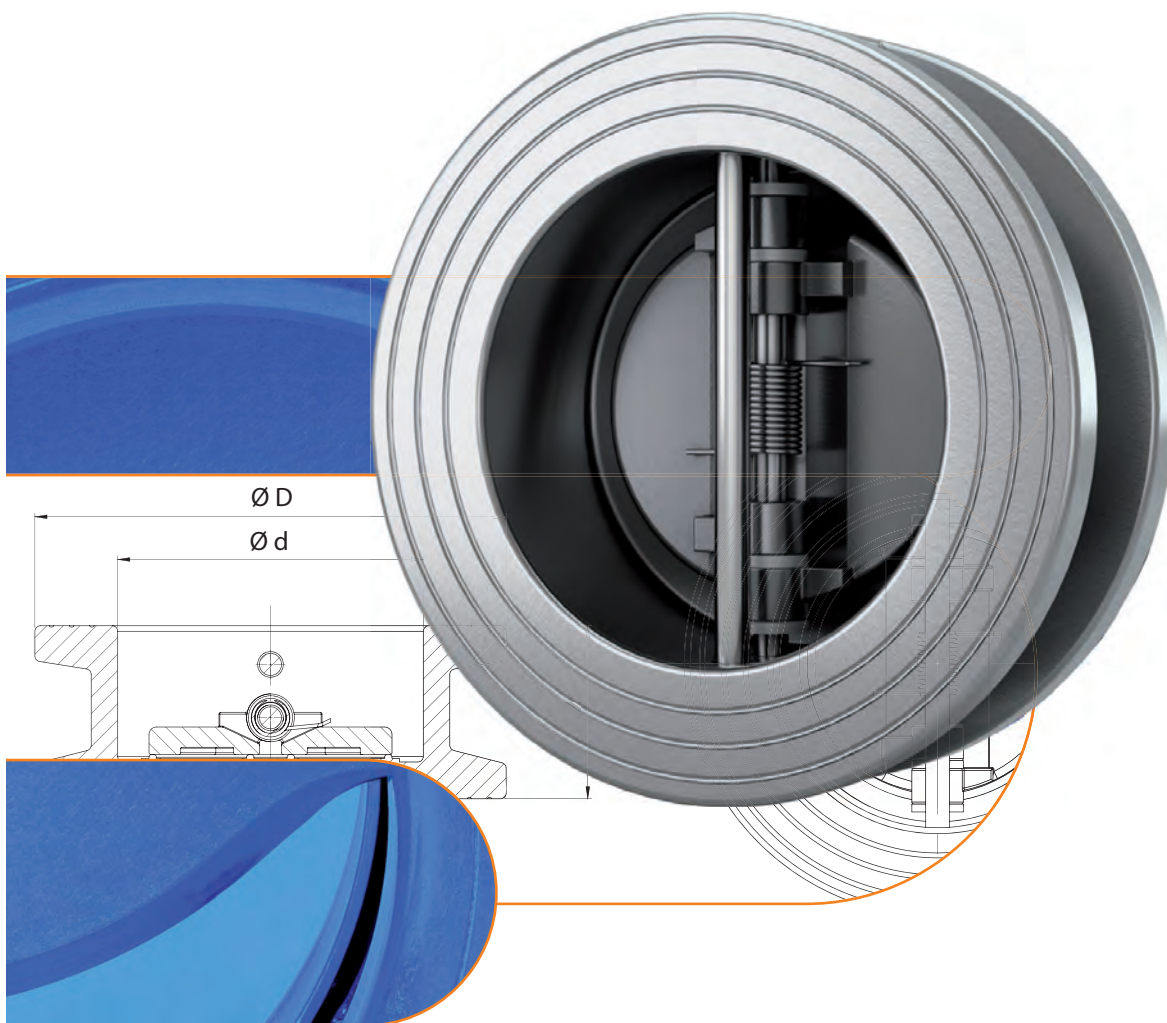


Dual Plate Check Valves

Type 915



MARTIN LOHSE GmbH
 Unteres Paradies 63 · D-89522 Heidenheim
 phone +49 7321 755-42
 sales@lohse-gmbh.de
 www.lohse-gmbh.de

General description	303
Overview matrix	303
Technical data	304
Dimensions	305
Pressure-loss diagram	306
Type code, Order Example	307

General description

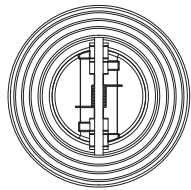
Description and intended purpose

Dual plate check valves impress with their simple design and short overall lengths (in accordance with DIN EN 558 series 16 or API 594). They also feature particularly high flow rates thanks to their low flow resistance. They can be installed directly between flanges (PN 10 – PN 40 oder Class 150 – Class 600). Dual plate check valves are maintenance-free.

Function

Dual plate check valves require only a low opening pressure. The resulting operating pressure and, if necessary the weight of the plates (depending on the installation position), forces the plates against a spring, thus releasing the medium. If the inlet pressure drops or the outlet pressure exceeds the inlet pressure, the valve closes and seals against the medium by means of a vulcanised seal in the body or by means of the metal seat.

Overview matrix

	915
	
nominal sizes ^{*1}	DN 50 – DN 900 / 2" – 36"
flange connection ^{*2}	PN 10 / PN 16 / PN 25 / PN 40 Class 150
max. pressure ^{*3}	FTF dimensions in acc. with DIN EN 558: max. 16 bar FTF dimensions in acc. with API 594: max. 20 bar
temperature ranges	-10 °C bis +200 °C
materials available ^{*4}	ductile iron / stainless steel / Duplex / Aluminium bronze
seals available	NBR / EPDM / FKM

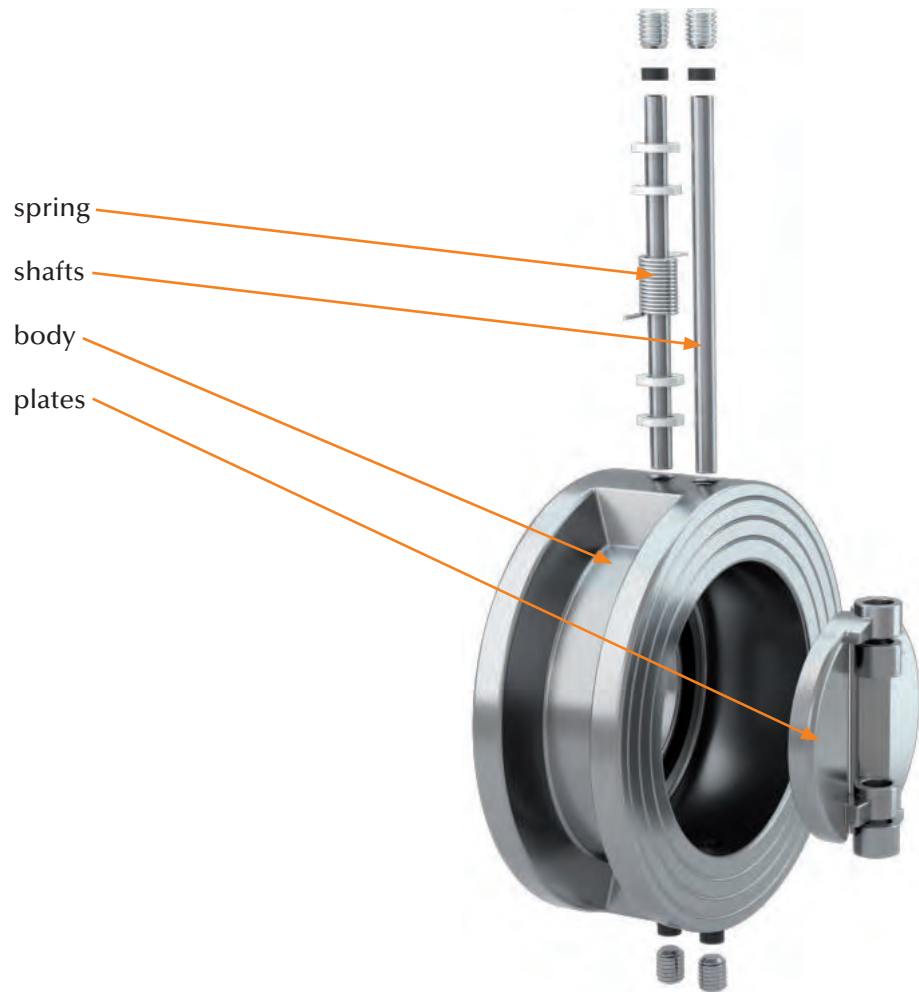
*1 larger nominal sizes on request

*2 other flange connections on request

*3 higher pressures on request

*4 other materials on request

Technical data



Design	Body	Plates	Shafts	Spring	Pressure range*1
1	EN-GJS-400-15*2	EN-GJS-400-15*3	1.4401	1.4571	ETF acc. to DIN EN 558: DN 50 - DN 250: 0 to max. 16 bar DN 300 - DN 900: 0 to max. 10 bar
2	EN-GJS-400-15*2	Aluminium bronze	1.4401	1.4571	
3	EN-GJS-400-15*2	1.4408	1.4401	1.4571	
4	1.4408	1.4408	1.4401	1.4571	0 to max. 10 bar
6	Aluminium bronze	Aluminium bronze	Aluminium bronze	Inconel 600	ETF acc. to API 594: 0 to max. 20 bar
7	1.4469	1.4469	Inconel 600	Inconel 600	

*1 max. allowable pressure is dependent on the temperature

*2 Epoxy-resin coated, with DVGW approval for coating

*3 nickel-plated

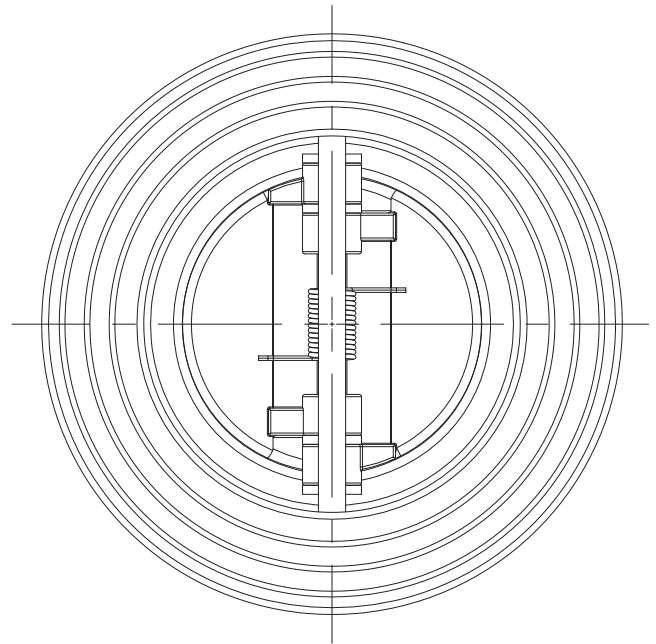
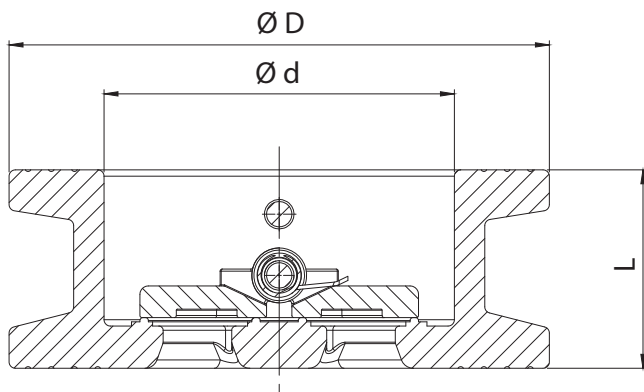
Seal	Temperature	Leakage rate*4
NBR	-10 °C to +90 °C	A
EPDM*5	-10 °C to +120 °C	A
FKM	-10 °C to +200 °C	A

*4 acc. to EN 12266-1 / in order to achieve the specified leakage rate, a back pressure of at least 1 bar is required

*5 approval for drinking water up to +85 °C

Additional quality features:

- Approval for drinking water in accordance with WRAS for EPDM seal
- DVGW approval for epoxy coating (design 1 – 3)



Nominal size		Ø D* ⁶					Ø d	L		Kv value [m ³ /h]	Opening pressure [mbar]			Weight * ⁷ [kg]
		PN 10	PN 16	PN 25	PN 40	Class 150		EN 558	API 594		↔	↑	↓	
DN 50	2"	107				101	70,5	43	60	63	~ 15	~ 20	~ 10	1,5
DN 65	2 1/2"	127				121	80	46	67	109	~ 15	~ 20	~ 10	2,3
DN 80	3"	142				134	98	64	73	172	~ 15	~ 20	~ 10	3,6
DN 100	4"	162		170		171	117	64	73	289	~ 15	~ 20	~ 10	4,4
DN 125	5"	192				192 (193) ^{*8}	145	70	83	476	~ 15	~ 20	~ 10	6,0
DN 150	6"	218		226		218 (219) ^{*8}	172	76	98	750	~ 15	~ 20	~ 10	8,6
DN 200	8"	273		285		273 (276) ^{*8}	221	89	127	1330	~ 15	~ 20	~ 10	15
DN 250	10"	328		345		340 (336) ^{*8}	275,5	114	146	2080	~ 15	~ 20	-	24
DN 300	12"	378	383	404		406	325,5	114	181	3676	~ 15	~ 20	-	35
DN 350	14"	438	444	458		448	361	127	184	5274	~ 15	~ 20	-	58
DN 400	16"	489	495	516		514 (511) ^{*8}	412	140	191	7306	~ 15	~ 30	-	75
DN 450	18"	539	555	566		546	468	152	203	9246	~ 15	~ 30	-	98
DN 500	20"	594	617	626		603	515	152	219	11410	~ 15	~ 30	-	125
DN 600	24"	695	734	734	-	714	624	178	222	17570	~ 15	~ 30	-	170
DN 700	28"	807	802	-	-	828	722	229	-	23920	~ 15	~ 40	-	250
DN 800	32"	917	912	-	-	936	824	241	-	31250	~ 15	~ 40	-	366
DN 900	36"	1016	1012	-	-	1044 ^{*9}	924	241	368 ^{*9}	39540	~ 15	~ 40	-	513

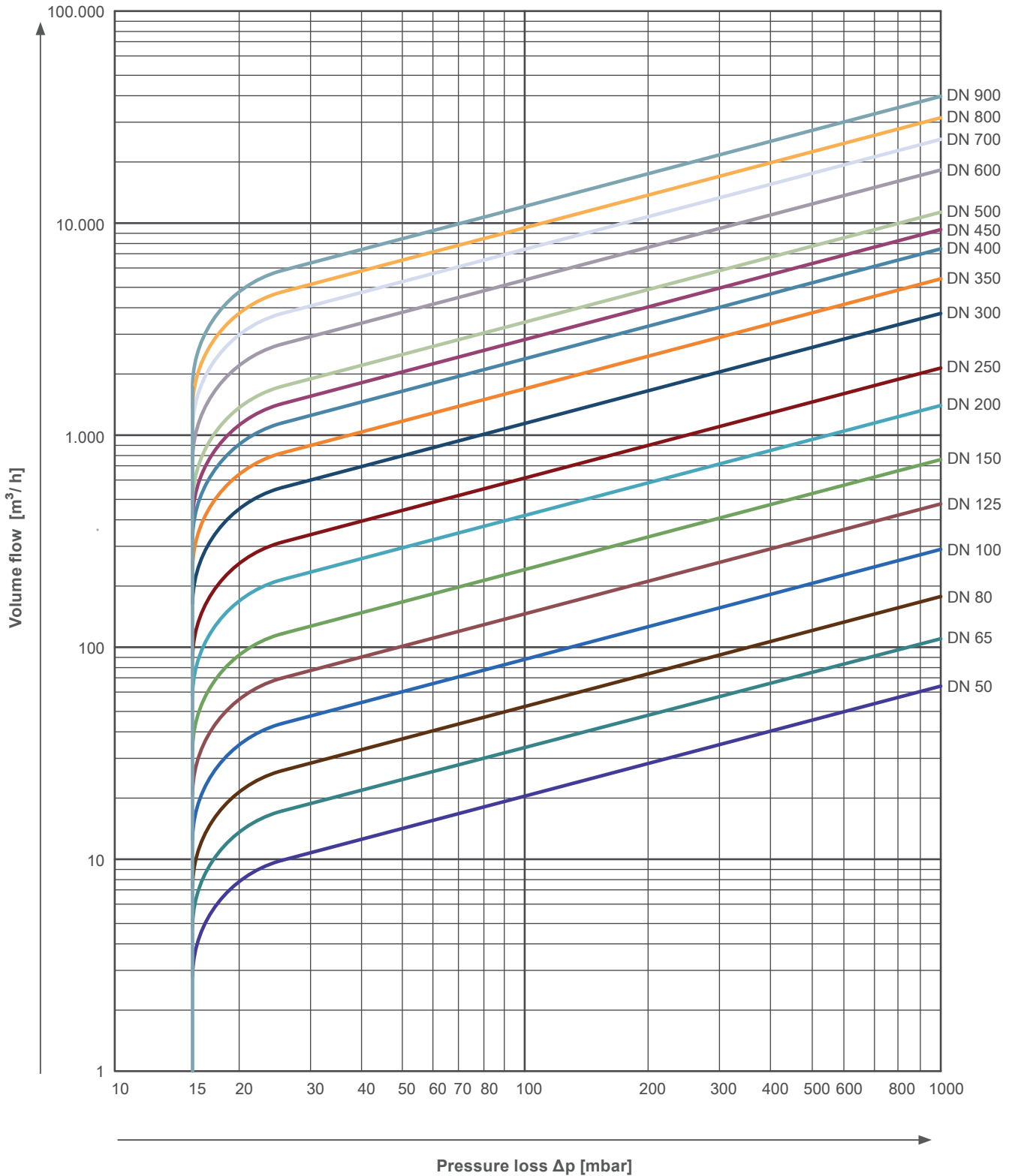
⁶ flange centering rings can be used to achieve the flange connection dimensions

⁷ weight refers to valve suitable for PN 10 flanges and may vary slightly, depending on the design

⁸ value in brackets: dimension for valve with FTF dimension in accordance with API 594

⁹ DN 900 with flange connection dimension and FTF dimension in accordance with Class 125

Pressure-loss diagram The diagram values are valid for water at a temperature of 20 °C and for valves with face-to-face dimensions in accordance with DIN EN 558, suitable for flanges in accordance with PN 10 – PN 40. At the opening of the valve, the curves apply to operation in horizontal pipelines. For calculation for other fluids or temperatures, please contact us.



Type code

type	DN	design	body	plates	shafts	spring	seal
915	50-900	1	EN-GJS-400-15 *1	EN-GJS-400-15 *2	1.4401	1.4571 (F1)	NBR (N) EPDM (E) FKM (F)
		2	EN-GJS-400-15 *1	Aluminium bronze	1.4401	1.4571 (F1)	
		3	EN-GJS-400-15 *1	1.4408	1.4401	1.4571 (F1)	
		4	1.4408	1.4408	1.4401	1.4571 (F1)	
		6	Aluminium bronze	Aluminium bronze	Aluminium bronze	Inconel 600 (F4)	
		7	1.4469	1.4469	Inconel 600	Inconel 600 (F4)	

*1 Epoxy resin-coated

*2 nickel-plated

Order example

DF-RSK 915 / 100 / 1 / N / F1

Type of valve	Dual plate check valve
Type	915
Nominal size	DN 100
Body / disc	EN-GJS-400-15
Seal	NBR
Spring	stainless steel 1.4571 (F1)



Germany + Switzerland

MARTIN LOHSE GmbH
Unteres Paradies 63
89522 Heidenheim
Phone: +49 7321 755-0
sales@lohse-gmbh.de
www.lohse-gmbh.de

Australia, New Zealand, Indonesia, Singapore, Malaysia

P.T. VOITH PAPER
Jl. Permata V Lot EE - 1
Kawasan Industri KIIC
Karawang 41361, INDONESIA
Phone : +62 267 419 719
Fax : +62 267 419 717

Austria (Papier- + Zellstoffindustrie, Abwasser + Kläranlagen) + CZ, SK, SLO, SRB, HR, H

Peter Rejter
Handel Mazzetti-Str. 85
3100 St. Pölten
Phone: +43 2742 77366
Fax: +43 2742 77366
office@industriearmaturen.at

Austria

Klinger Gebetsroither GmbH & Co KG

Am Kanal 8-10
2352 Gumpoldskirchen
Phone: +43 2252 60 71 00 3029
Fax: +43 2252 60 71 00 3010
gerhard.praxmarer@gebetsroither.at
www.gebetsroither.at

Belgium

Hanwel Belgium N.V.
Winninglaan 15
9140 Temse
Phone: +32 3 7110353
Fax: + 32 3 7110579
info@hanwel.be
www.hanwel.be

Chile

INTERTECH
Prat 116, Of 31
Curicó, Chile
phone +56.075.322033
www.inter-tech.cl
n.flores@inter-tech.cl

People's Rep. Of China

Shanghai Fier Mechanical Co. LTD
Room B4, 15/F HuaFu Bldg.
No. 585 LongHua xi Rd.
ShangHai, China 200232
Phone: +86 21 54591038
Fax: +86 21 54240616
MP: 13611665381
shfier@163.com
www.fier.com.cn

Denmark

Uni-Valve A/S
Sydvestvej 138 – 140
2600 Glostrup
Phone: +45 43 438200
Fax: +45 43 437475
mail@uni-valve.com
www.uni-valve.com

Finland

KLINGER Finland Oy
Tinankuja 3
02430 Masala
Phone: +358 10 4001011
info@klinger.fi
www.klinger.fi

France, MA, TN, DZ

T.N.P.
30 Boussegré
58140 Lormes
Phone: +33 1 559711-11
Fax: +33 1 48835207
contact@tnp.fr
www.tnp.fr

Great Britain

Voith Turbo Ltd.
6 Beddington Farm Road
Croydon, Surrey CRO, 4XB
Phone: +44 208 6673013
Fax: +44 208 6670403
matthew.healy@voith.com

Greece

Niko Mikopoulos, BSc.
Metron Str. 28
17123 Nea Smyrni-Athens
Phone: +30 6 98 305 10 70
n.mikopoulos@nm-bc.com

India

Antrieb Technik Private Limited
59 (old 359) Sidco Industrial Estate
Ambattur
Chennai-600 098
Tamilnadu / INDIA
Phone: +91 44 262-58303
Fax: +91 44 2819-3718
antrieb.technik@gmail.com

Israel

P.B.A Wiesner Agencies Ltd.
P. O. Box 4622
Petach-Tikva 49277
Phone: +972 3 9052111
Fax: +972 3 9052110
ofra@pba.co.il

Italy

Techno Paper S.R.L.
Viale Certosa 269
20151 Milano (MI)
Phone: +39 02 78627750
Fax: +39 02 45471638
info@techno-paper.com
www.techno-paper.com

Japan

Voith IHI Paper Technology Co.Ltd.
River City M-SQUARE 7F
2-1-6 Tsukuda, Chuo-ku
1040051 Tokyo
Phone: +81 3 6221 3108
Fax: +81 3 6221 3126

Korea

C.S-Automation Co., Ltd. (Customer Satisfaction Automation)
#804 Sejung Technovalley
279-5 Songjeong-Dong
Heungdeok-Gu
Cheongju-Si
South Korea. 361-290
Phone: +82 43 276 1332
Fax: +82 43 278 1332
changseol@korea.com

Netherlands

Hanwel B. V.
Jan Tinbergenstraat 209
7559 SP Hengelo
The Netherlands
Phone: +31 74 2650000
Fax: +31 74 2650001
verkoop@hanwel.com
www.hanwel.com

Norway

KSB Norge AS
Haugenveien 29
1400 SKI
Phone: +47 96 900 900
firmapost@ksb.com
www.ksb.com/ksb-no

Philippines

R. Dan and Co., Inc.
Lot 6-9 Block 5 Greenway Business
Park
Bulihan, Silang,
Cavite Philippines 4118
Phone: +63 960 690 0244
ester.poe@robertdan.com.ph
www.robertdan.com.ph

Poland

Waldemar Kulicki
ul. Heweliusza 37/4
87-148 Papowo Toruńskie
Phone: +48 509 46 64 25
waldemar-kulicki@wp.pl
www.wkulicki.eu

Rep. of South Africa

Voith Turbo (Pty) Ltd
P.O. Box 13171
Witfield, 1467
Gauteng, SOUTH AFRICA
Phone: +27 11 418 4000
Fax: +27 11 418 4080
info.vtza@voith.com
www.rsa.voithturbo.com

Spain, Portugal

CELPAP EQUIPOS, S.L.
C/Amposta, 14-18
08174 Sant Cugat del Vallés
(Barcelona)
Phone +34 93 415 18 75
celpap@celpap.com
www.celpap.com

Sweden

PA-Ventiler AB
Sagbäcksvägen 3B
43736 Lindome
Phone: +46 31 992500
Fax: +46 31 992503
info@paventiler.se
www.paventiler.se

Switzerland

dampfEXPERTE GmbH
Häsiweg 33
5018 Erlinsbach
Phone: +41 62 5448090
roger.fehr@dampfexperte.ch
www.dampfexperte.ch

Taiwan

E-Chen Engineering Co., Ltd.
3F-3, No. 151, Sec. 4,
Hsin-Yi Road,
Taipei, Taiwan, R.O.C.
Phone: +886 22 7056185
Fax: +886 22 7045967
echen123@ms15.hinet.net

Thailand

Weston Myer Ltd.
8 Soi Seri-Thai 58
Seri-Thai Road
10510 Minburi Bangkok
Phone: +66 2 3745869
Fax: +66 2 375-1179
comm1@westonmyer.com

Turkey

Sanrep Kağıt San. ve Tic. Ltd. Şti.
Altiyol, Kuşdili Caddesi No:19/7
H.Fazlıoğlu İş Merkezi
34714 Kadıköy – İSTANBUL
Phone: +90 216 345 40 48
Fax: +90 216 330 73 12
sanrep@sanrep.com
www.sanrep.com

USA, Canada, Mexico

Voith Paper Inc.
2200 N. Roemer Rd.
Appleton, WI 54912-2237
Phone: +1 920 – 358 – 2396
Fax: +1 920 – 731 – 5126
VPAWSpareParts@voith.com