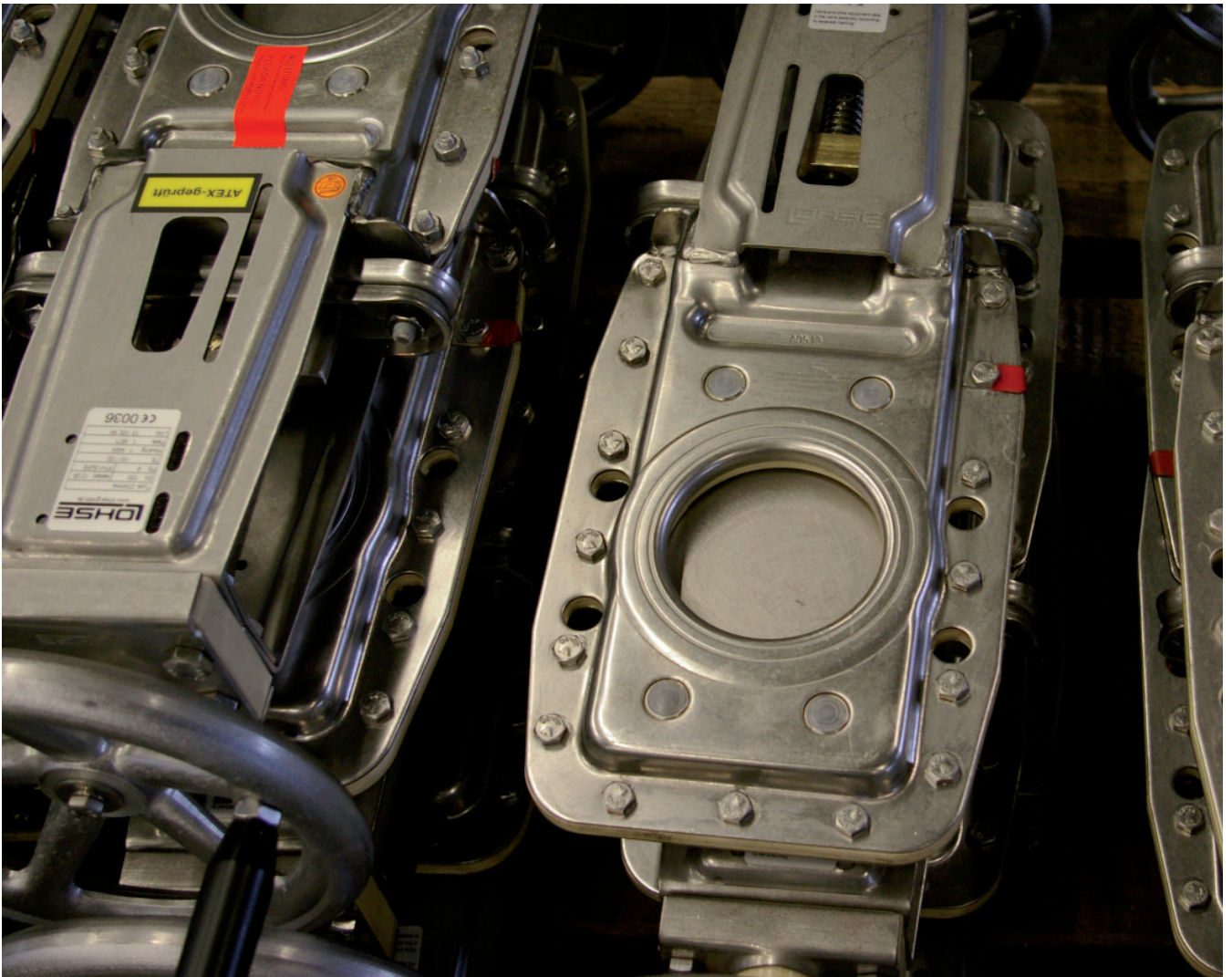


MARTIN LOHSE GmbH

Benefits of LOHSE Compact-Valves



MARTIN LOHSE GmbH

Unteres Paradies 63 · D-89522 Heidenheim · +49 7321 755-0 · www.lohse-gmbh.de

What are the benefits of our LOHSE Compact knife gate valves?

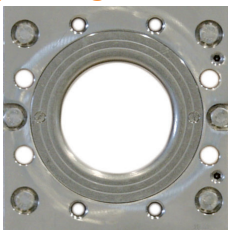
Our tried and tested compact knife gate valves have unique features and benefits which become evident at the outset from installation, through to operation and finally to maintenance.

Housing



- Two part housing of stainless steel makes for easy maintenance
- Housing is also available in titanium, Hasteloy and other materials (high-alloyed steels, e.g. sulfuric and bleaching resistant)
- The sturdy construction of the housings are able to withstand water hammer
- The design of the valves are always specially adapted to the medium or application

Flow opening



- The valve plate in the open position allows a 100% flow area
- No contractions so there are no turbulences
- Thoroughly water-tight
- Easily replaceable seals in the flow area
- The valve plate sets the entrance absolutely free while the valve plate is in an open position, no projection, perfect flow

Valve plate



- Special design of the valve plate, the valve plate scrapes the fibres out of the slide cups (scraper edge) to prevent stock depositing (e.g. type CNA)
- Valve plate is prepared for the attachment of the limit switch striker plate
- Our valve plates are very sturdy
- Surface treatment is possible to increase the lifetime.

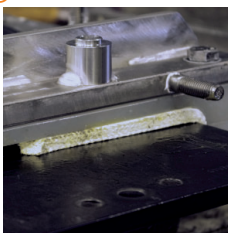
DN [mm]	thickness of valve plate [mm]
50 – 80	6
100 – 150	8
200 – 350	10
400	12
450 – 500	15
600	18

How the valve plate is guided



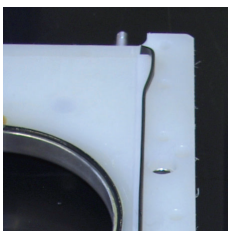
- Easy replacable slide cups, made of special plastic (GPS, PE, PP, PTFE, Tivar HOT)
- The valve plate is guided exactly in all areas
- By optimal guiding „fluttering“ of the slide plate is prevented even in the case of high differential pressures of the medium
- Recess in the bottom area prevents clogging in the plate end position

Packing



- LOHSE packing system: packing which is impregnated with PTFE and has a profile rubber
- The pre-tensioned rubber profile ring ensures an even pressure, extending the life span of the packing
- Pressure on the packing can be adjusted via the stuffing box gland

Sealings



- Depending on the application, the sealing is available in NBR, EPDM, VITON
- Easy to replace

Bracket



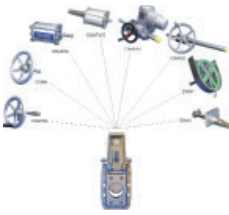
- Solid bracket of stainless steel for mounting different types of drive (LOHSE modular system) attachment of accessories
- All common end position sensors, solenoid valves, positioners and junction boxes can fit easily with mounting fixtures

Protection guards



- All fully automated valves are delivered with protection guarding

Drive Options



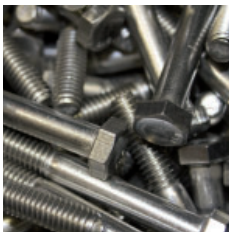
- The LOHSE modular system: all drives are interchangeable even if the valve is in situ as long as safety rules are adhered to
- Handwheel with rising or non-rising stem
- Anodized air cylinder with additional stroke adjustment in both directions and spring return options available
- Chain wheel with protection guard and chain for unapproachable locations
- All established electric actuators and bevel gear actuators

Production



- A high level of the manufacture is done at our factory enabling us to have a very flexible approach – non standard items are possible in relatively quick delivery times
- High level of quality standards through constant inspection procedures – DIN ISO 9001, CE accreditation

Fixtures



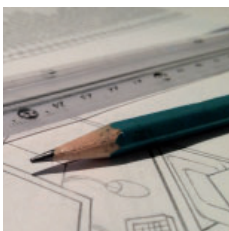
- At valves and operating elements generally of stainless steel

Service



- Consultation and sales through our long established regional representation
- Counseling and service directly by the producer
- Repairs directly in house of the manufacturer
- Short delivery times for valves and spare parts
- Supplier of all knife gate valves (reject valves, special valves)

Evolution



- Continuous development regarding design, materials, manufacturing facilities and customer care
- In house testing
- Close cooperation with customers, machine manufacturers in the pulp and paper industry and suppliers

MARTIN LOHSE GmbH

Unteres Paradies 63
D-89522 Heidenheim
Tel. +49 7321 755-42

www.lohse-gmbh.de