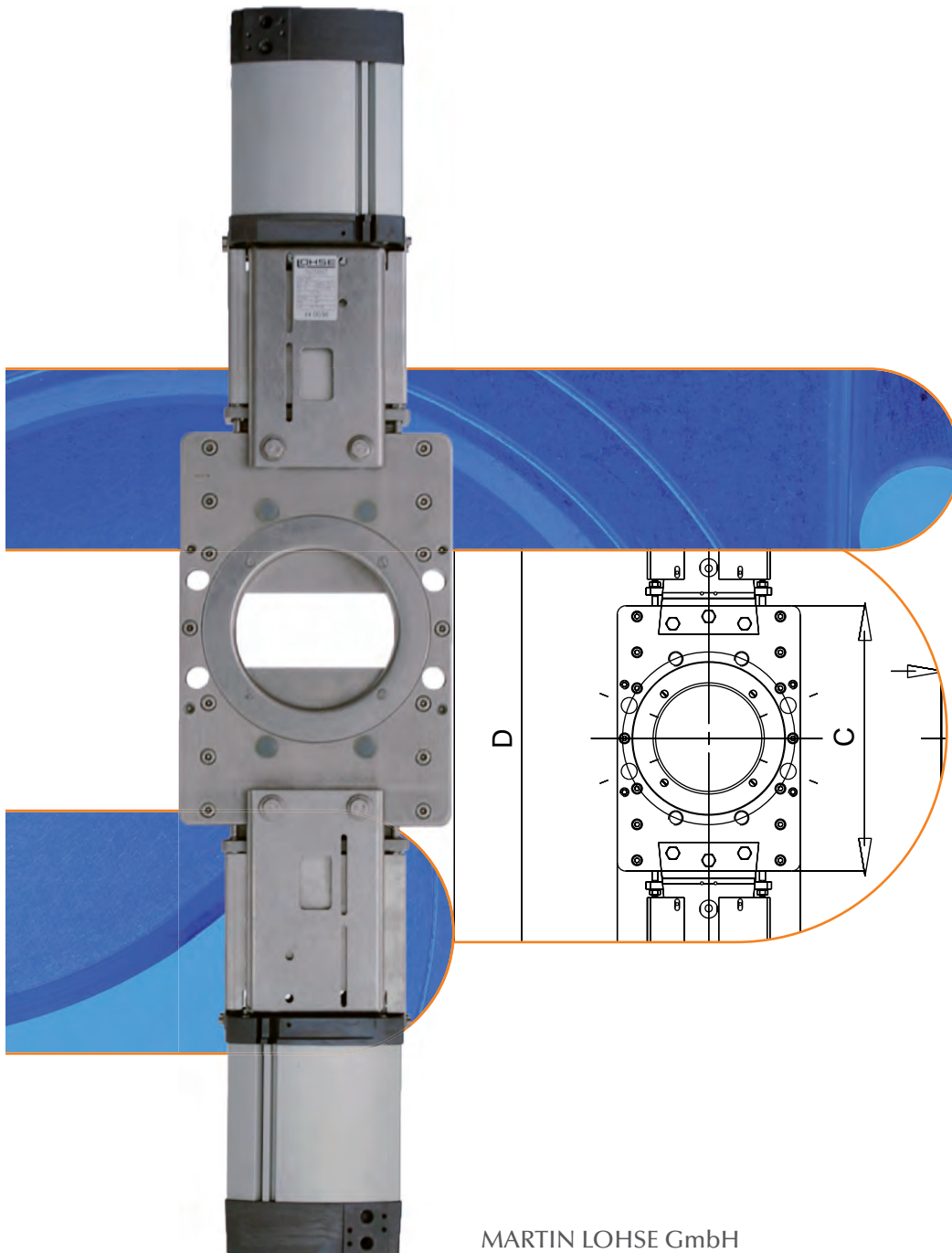


Valves of stainless steel

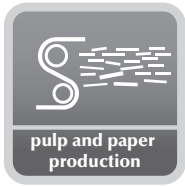
Reject-Valves

TAP/G



MARTIN LOHSE GmbH
Unteres Paradies 63 · D-89522 Heidenheim
phone +49 7321 755-42
sales@lohse-gmbh.de
www.lohse-gmbh.de

Applications



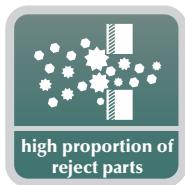
General usage

- media with reject fraction (e.g. nails and staples)
- coarse-grained media
- granulates
- powders
- temperature range to 80 °C
- see table for permitted operating pressure

Locations

- extraction devices for heavy soiling applications
- dumping and emptying devices for heavy soiling applications
- cleaning machines

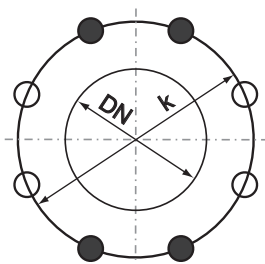
Media



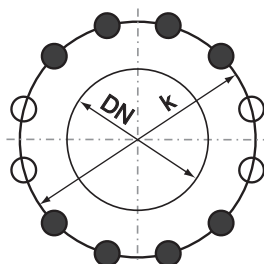
Materials

- housing S355J2
or
1.4541
- flanging ring 1.4571
- valve plate 1.4571
- slide cups PE-UHMW (RCH1000)
- sealing EPDM
- stuffing box gland
DN 100 – 500 1.4541
DN 600 – 800 1.4301
- bracket S355 J2 (steel)
or
1.4541
- max. operating pressure
DN 100 – 250 4 bar
DN 300 – 800 2 bar
- max. operating temperature 80° C

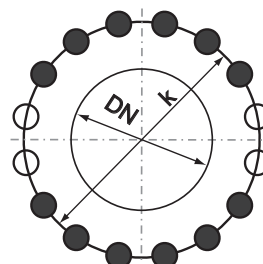
Flange bores for LOHSE TA-valves
according to DIN EN 1092-1, PN 10



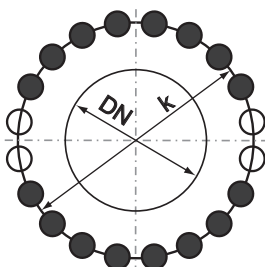
DN 100-200



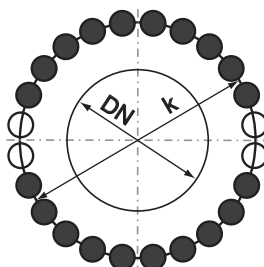
DN 250-300



DN 350-400

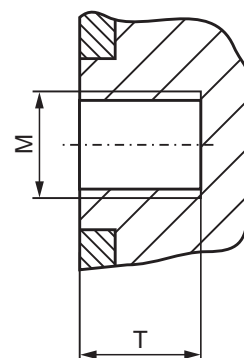


DN 450-600



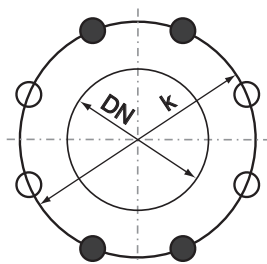
DN 700-800

DN [mm]	K [mm]	Z	M	T [mm]	Z1	Z2
100	180	8	M16	12	4	4
125	210	8	M16	12	4	4
150	240	8	M20	16	4	4
200	295	8	M20	16	4	4
250	350	12	M20	20	8	4
300	400	12	M20	20	8	4
350	460	16	M20	20	12	4
400	515	16	M24	23	12	4
450	565	20	M24	30	16	4
500	620	20	M24	30	16	4
600	725	20	M27	35	16	4
700	840	24	M27	40	20	4
800	950	24	M30	45	20	4

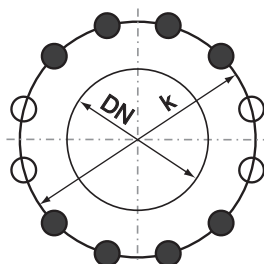


Z = total number of holes
 Z1 = number of joint-holes
 Z2 = number of through-going bores
 T = usable depth of thread

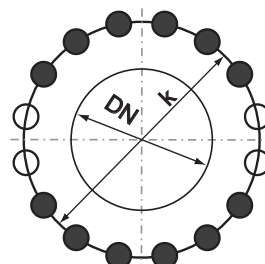
Flange bores for LOHSE TA-valves
according to ANSI B 16.5 Class 150 (≥ DN 700: ANSI B 16.47 Class 150)



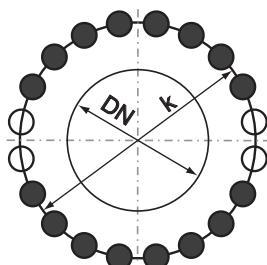
DN 100-200



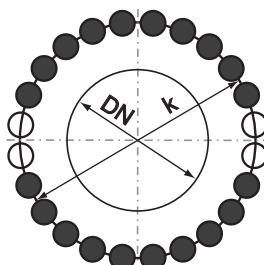
DN 250-350



DN 400-450

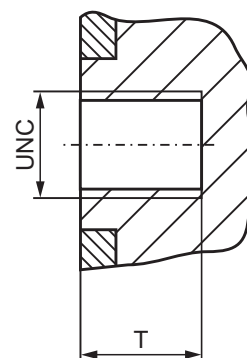


DN 500-600



DN 700-800

DN [mm]	DN [inch]	K [mm]	K [inch]	Z	UNC	T [mm]	T [inch]	Z1	Z2
100	4	190.5	7 1/2	8	5/8"-11	12	0.472	4	4
125	5	215.9	8 1/2	8	3/4"-10	12	0.472	4	4
150	6	241.3	9 1/2	8	3/4"-10	16	0.630	4	4
200	8	298.5	11 3/4	8	3/4"-10	16	0.630	4	4
250	10	362	14 1/4	12	7/8"-9	20	0.787	8	4
300	12	431.8	17	12	7/8"-9	20	0.787	8	4
350	14	476.3	18 3/4	12	1"-8	20	0.787	8	4
400	16	539.8	21 1/4	16	1"-8	23	0.910	12	4
450	18	577.9	22 3/4	16	1 1/8"-7	30	1.181	12	4
500	20	635	25	20	1 1/8"-7	30	1.181	16	4
600	24	749.3	29 1/2	20	1 1/4"-7	35	1,378	16	4
700	28	863	34	28	1 1/4"-7	40	1.575	24	4
800	32	978	38 1/2	28	1 1/2"-6	45	1.772	24	4

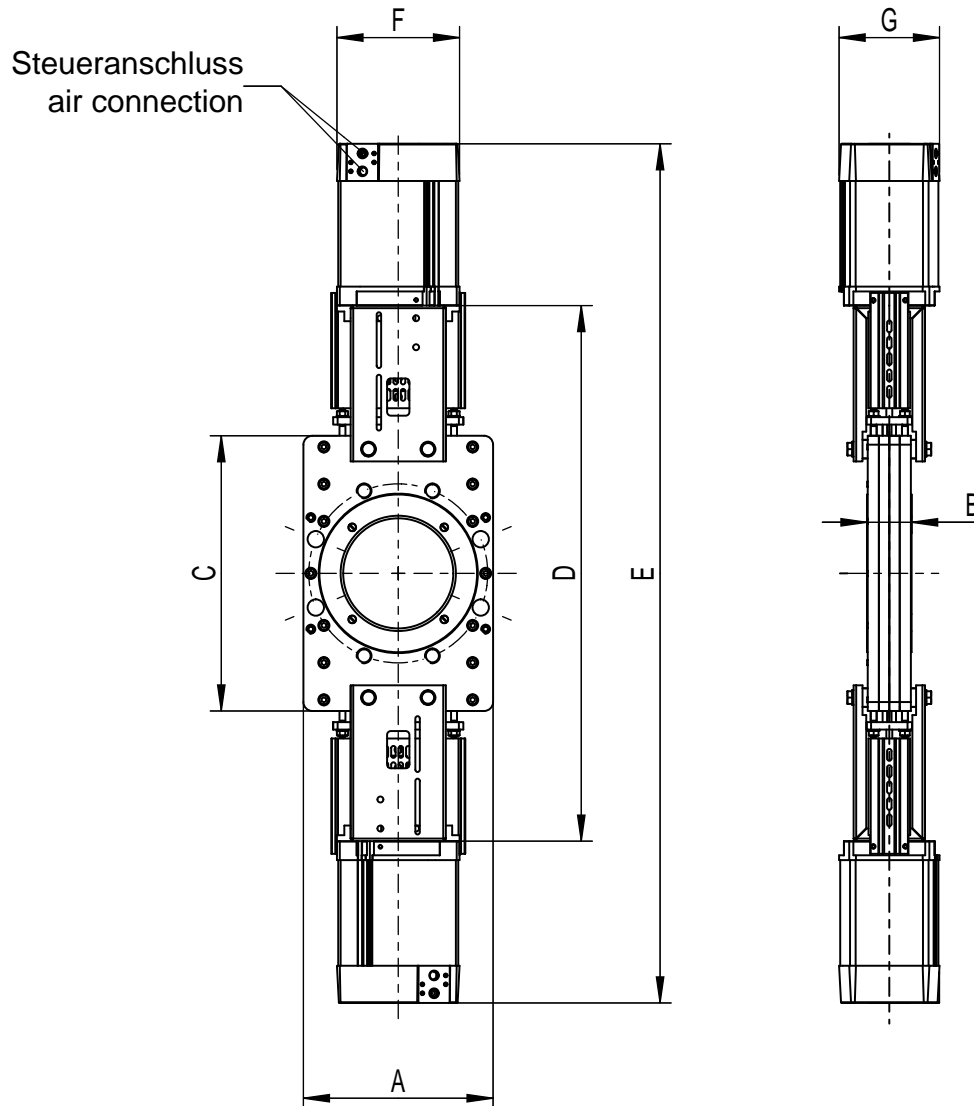


Z = total number of holes
 Z1 = number of joint-holes
 Z2 = number of through-going bores
 T = usable depth of thread

Reject-valve

two double-acting pneumatic cylinders and protection guard

Housing stainless steel or steel



DN	PS [bar]	A	B	C	D	E	F	G	cyl Ø	air connection	weight ~[kg]
100	4	200	50	300	590	969	165	145	125	G 1/4"	33,9
125	4	230	50	325	640	1043	165	145	125	G 1/4"	37,2
150	4	255	60	370	720	1182	204	178	160	G 1/4"	53,5
200	4	310	60	460	870	1414	244	215	200	G 1/2"	84,6
250	4	380	70	550	1020	1614	244	215	200	G 1/2"	120,3
300	2	430	70	600	1126	1810	283	242	230	G 1/2"	159,2

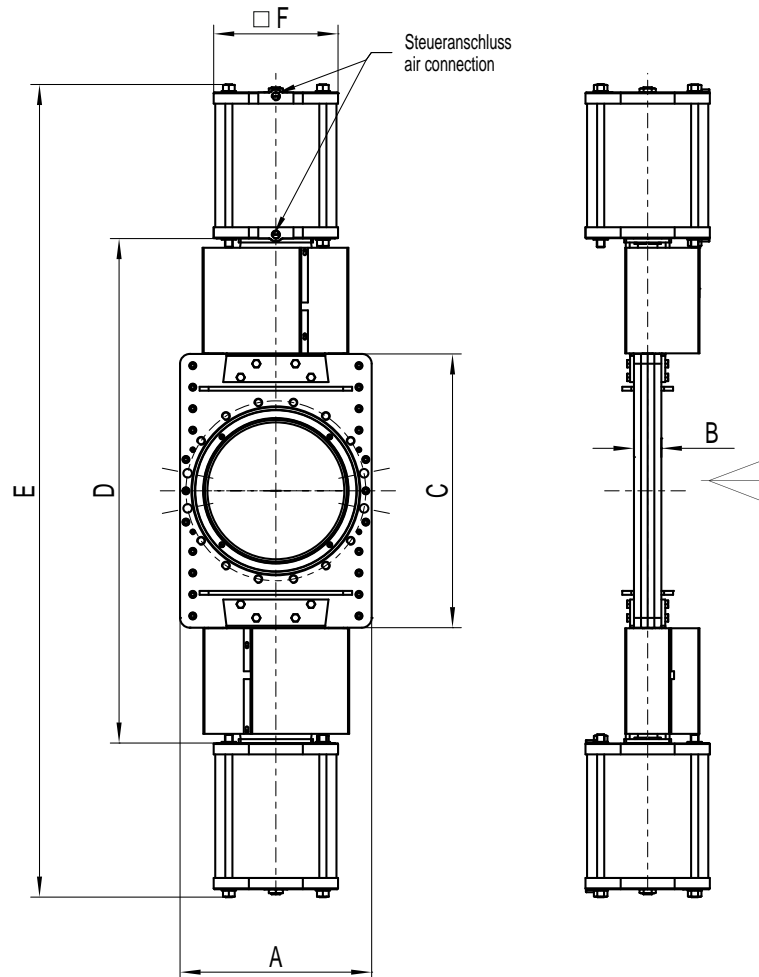
Mounting only in vertical flow direction. Higher operating pressures on request.

Dimensions in mm, flange bores to DIN EN 1092-1, PN 10 or ANSI B 16.5 class 150; air connection acc. VDI/VDE 3845 (NAMUR). Further sizes on request.

Reject-valve

two double-acting pneumatic cylinders and protection guard

Housing stainless steel or steel



DN	PS [bar]	A	B	C	D	E	F	cyl Ø	air connection	weight ~[kg]
350	2	490	70	700	1290	2078	318	300	G 1/2"	240
400	2	540	90	800	1578	2366	318	300	G 1/2"	300
450	2	600	110	900	1730	2574	318	300	G 1/2"	405
500	2	650	110	1100	2010	3060	425	400	G 3/4"	706
600	2	800	110	1300	2320	3482	425	400	G 1/2"	904
700	2	930	110	1500	2720	4007	645	500	G 3/4"	1370
800	2	1030	140	1750	3100	4382	645	500	G 3/4"	2335

Mounting only in vertical flow direction. Higher operating pressures on request.

Dimensions in mm, flange bores to DIN EN 1092-1, PN 10 or ANSI B 16.5 class 150 (≥ DN 700: ANSI B 16.47 class 150). Further sizes on request.

Germany + Switzerland

MARTIN LOHSE GmbH
Unteres Paradies 63
89522 Heidenheim
Phone: +49 7321 755-0
sales@lohse-gmbh.de
www.lohse-gmbh.de

Australia, New Zealand, Indonesia, Singapore, Malaysia

P.T. VOITH PAPER
Jl. Permata V Lot EE - 1
Kawasan Industri KIIC
Karawang 41361, INDONESIA
Phone : +62 267 419 719
Fax : +62 267 419 717

Austria (Papier- + Zellstoffindustrie, Abwasser + Kläranlagen) + CZ, SK, SLO, SRB, HR, H

Peter Rejter
Handel Mazzetti-Str. 85
3100 St. Pölten
Phone: +43 2742 77366
Fax: +43 2742 77366
office@industriearmaturen.at

Austria

Klinger Gebetsroither GmbH & Co KG

Am Kanal 8-10
2352 Gumpoldskirchen
Phone: +43 2252 60 71 00 3029
Fax: +43 2252 60 71 00 3010
gerhard.praxmarer@gebetsroither.at
www.gebetsroither.at

Belgium

Hanwel Belgium N.V.
Winninglaan 15
9140 Temse
Phone: +32 3 7110353
Fax: + 32 3 7110579
info@hanwel.be
www.hanwel.be

Chile

INTERTECH
Prat 116, Of 31
Curicó, Chile
phone +56.075.322033
www.inter-tech.cl
n.flores@inter-tech.cl

People's Rep. Of China

Shanghai Fier Mechanical Co. LTD
Room B4, 15/F HuaFu Bldg.
No. 585 LongHua xi Rd.
ShangHai, China 200232
Phone: +86 21 54591038
Fax: +86 21 54240616
MP: 13611665381
shfier@163.com
www.fier.com.cn

Denmark

Uni-Valve A/S
Sydvestvej 138 – 140
2600 Glostrup
Phone: +45 43 438200
Fax: +45 43 437475
mail@uni-valve.com
www.uni-valve.com

Finland

KLINGER Finland Oy
Tinankuja 3
02430 Masala
Phone: +358 10 4001011
info@klinger.fi
www.klinger.fi

France, MA, TN, DZ

T.N.P.
30 Boussegré
58140 Lormes
Phone: +33 1 559711-11
Fax: +33 1 48835207
contact@tnp.fr
www.tnp.fr

Great Britain

Voith Turbo Ltd.
6 Beddington Farm Road
Croydon, Surrey CRO, 4XB
Phone: +44 208 6673013
Fax: +44 208 6670403
matthew.healy@voith.com

Greece

Niko Mikopoulos, BSc.
Metron Str. 28
17123 Nea Smyrni-Athens
Phone: +30 6 98 305 10 70
n.mikopoulos@nm-bc.com

India

Antrieb Technik Private Limited
59 (old 359) Sidco Industrial Estate
Ambattur
Chennai-600 098
Tamilnadu / INDIA
Phone: +91 44 262-58303
Fax: +91 44 2819-3718
antrieb.technik@gmail.com

Israel

P.B.A Wiesner Agencies Ltd.
P. O. Box 4622
Petach-Tikva 49277
Phone: +972 3 9052111
Fax: +972 3 9052110
ofra@pba.co.il

Italy

Techno Paper S.R.L.
Viale Certosa 269
20151 Milano (MI)
Phone: +39 02 78627750
Fax: +39 02 45471638
info@techno-paper.com
www.techno-paper.com

Japan

Voith IHI Paper Technology Co.Ltd.
River City M-SQUARE 7F
2-1-6 Tsukuda, Chuo-ku
1040051 Tokyo
Phone: +81 3 6221 3108
Fax: +81 3 6221 3126

Korea

C.S-Automation Co., Ltd. (Customer Satisfaction Automation)
#804 Sejung Technovalley
279-5 Songjeong-Dong
Heungdeok-Gu
Cheongju-Si
South Korea. 361-290
Phone: +82 43 276 1332
Fax: +82 43 278 1332
changseol@korea.com

Netherlands

Hanwel B. V.
Jan Tinbergenstraat 209
7559 SP Hengelo
The Netherlands
Phone: +31 74 2650000
Fax: +31 74 2650001
verkoop@hanwel.com
www.hanwel.com

Norway

KS Norge AS
Holtbråtveien 69
1449 Drøbak
Phone: +47 917 19995
firmapost@ksb.com
www.ksb.com/en-no

Philippines

R. Dan and Co., Inc.
Lot 6-9 Block 5 Greenway Business
Park
Bulihan, Silang,
Cavite Philippines 4118
Phone: +63 960 690 0244
ester.poe@robertdan.com.ph
www.robertdan.com.ph

Poland

Waldemar Kulicki
ul. Heweliusza 37/4
87-148 Papowo Toruńskie
Phone: +48 509 46 64 25
waldemar-kulicki@wp.pl
www.wkulicki.eu

Rep. of South Africa

Voith Turbo (Pty) Ltd
P.O. Box 13171
Witfield, 1467
Gauteng, SOUTH AFRICA
Phone: +27 11 418 4000
Fax: +27 11 418 4080
info.vtza@voith.com
www.rsa.voithturbo.com

Spain, Portugal

CELPAP EQUIPOS, S.L.
C/Amposta, 14-18
08174 Sant Cugat del Vallés
(Barcelona)
Phone +34 93 415 18 75
celpap@celpap.com
www.celpap.com

Sweden

PA-Ventiler AB
Sagbäcksvägen 3B
43736 Lindome
Phone: +46 31 992500
Fax: +46 31 992503
info@paventiler.se
www.paventiler.se

Switzerland

dampfEXPERTE GmbH
Häsiweg 33
5018 Erlinsbach
Phone: +41 62 5448090
roger.fehr@dampfexperte.ch
www.dampfexperte.ch

Taiwan

E-Chen Engineering Co., Ltd.
3F-3, No. 151, Sec. 4,
Hsin-Yi Road,
Taipei, Taiwan, R.O.C.
Phone: +886 22 7056185
Fax: +886 22 7045967
echen123@ms15.hinet.net

Thailand

Weston Myer Ltd.
8 Soi Seri-Thai 58
Seri-Thai Road
10510 Minburi Bangkok
Phone: +66 2 3745869
Fax: +66 2 375-1179
comm1@westonmyer.com

Turkey

Sanrep Kağıt San. ve Tic. Ltd. Şti.
Altiyol, Kuşdili Caddesi No:19/7
H.Fazlıoğlu İş Merkezi
34714 Kadıköy – İSTANBUL
Phone: +90 216 345 40 48
Fax: +90 216 330 73 12
sanrep@sanrep.com
www.sanrep.com

USA, Canada, Mexico

Voith Paper Inc.
2200 N. Roemer Rd.
Appleton, WI 54912-2237
Phone: +1 920 – 358 – 2396
Fax: +1 920 – 731 – 5126
VPAWSpareParts@voith.com