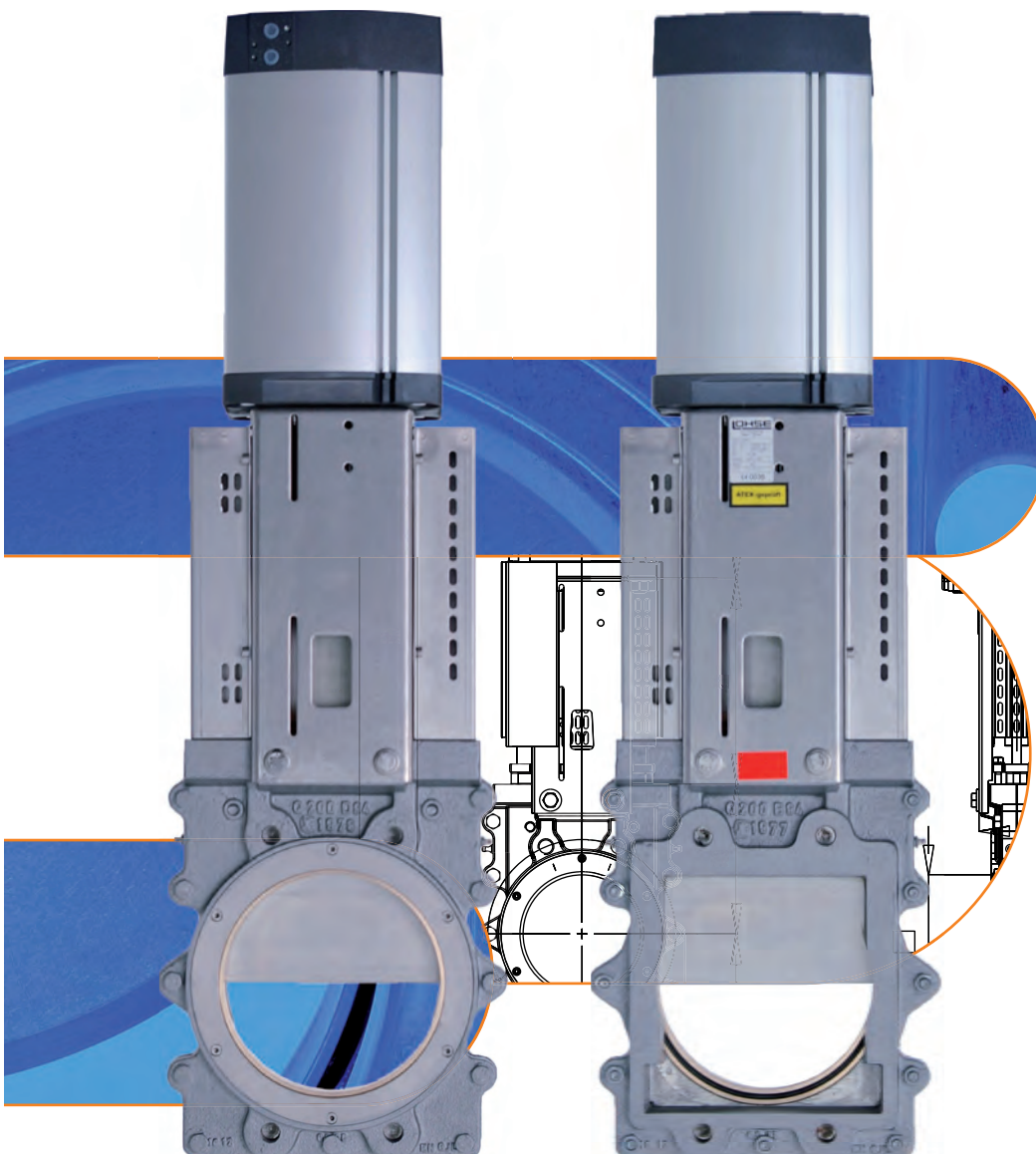


Valves

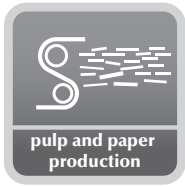
Reject-Valves

NAQP/G



MARTIN LOHSE GmbH
Unteres Paradies 63 · D-89522 Heidenheim
phone +49 7321 755-42
sales@lohse-gmbh.de
www.lohse-gmbh.de

Applications



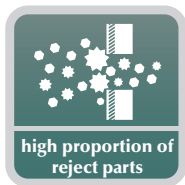
General usage

- media with reject fraction (e.g. nails and staples)
- coarse-grained media
- granulates
- powders
- temperature range to 80 °C
- see table for permitted operating pressure

Locations

- extraction devices for heavy soiling applications
- dumping and emptying devices for heavy soiling applications
- cleaning machines

Media



Features

Model

- round inlet
- allows it to be connected to DIN EN 1092-1, PN 10 round pipes, with integral wearing ring and gasket, spring-mounted
- square outlet
- the outlet is larger than the inlet, allowing unwanted materials to fall out freely, no pockets in the base of the housing

Valve plate

- prepared so that switch sensors may be connected for limit position monitoring

Valve plate guide

- the guides in the front third are shortened, i.e. the sliding plate guarantees a clearance
- replaceable sliding rails made from bronze or special plastic
- protected by housing plate on the inlet side

Seal

- the combination of wearing ring and gasket on the inlet side, with the pressure deflected away to the inlet side, is made possible because the sliding plate is guided exactly
- easy to replace, can be accessed from outside

Watertight

- Leak test according to DIN EN 12266-02:2012-04 Table A5, test medium liquid, leakage rate A

Accessories

On the inlet side:

- conical ring insert, hardened

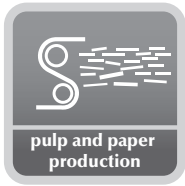
On the outlet side:

- stainless steel adapter, square to round, allows outlet to be continued on round DIN EN 1092-1, PN 10 pipes

Options:

- holding parts and switching sensors for limit switches, suitable for all common types of limit switch
- solenoid valve attached directly to the pneumatic cylinder
- housing and sliding plate in other materials (as required by customer)
- highly wear-resistant version of the sliding plate made from hardened stainless steel

Applications



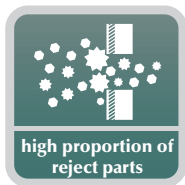
General usage

- media with reject fraction (e.g. nails and staples)
- coarse-grained media
- granulates
- powders
- temperature range to 80 °C
- see table for permitted operating pressure

Locations

- extraction devices for heavy soiling applications
- dumping and emptying devices for heavy soiling applications
- cleaning machines

Media



Materials

- | | |
|------------------------------|--------------------|
| • housing | EN-GJL-250 (GG 25) |
| • valve plate | 1.4571 |
| • sealing | NBR |
| • slide borders | CuAl10 Mo5Fe4 |
| • wear ring | CuSn12 |
| • scraper | CuAl10 Ni5Fe4 |
| • stuffing box gland | CuSn5ZnPb |
| • packing assembly | Arostat / EPDM |
| • press ring | 1.4541 |
| • bracket | 1.4301 |
| • max. operating pressure | |
| DN 150 – 250 | 8 bar |
| • max. operating temperature | 80° C |

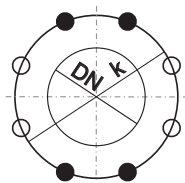
Flange bores for LOHSE NAQ valves with metric tread

Inlet side

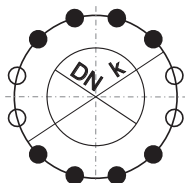
according DIN EN 1092-1, PN 10

Outlet side

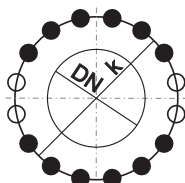
according LOHSE standard



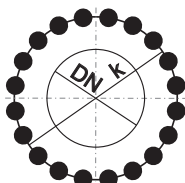
DN 100-200



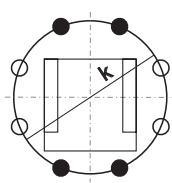
DN 250-300



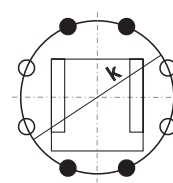
DN 400



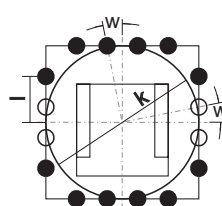
DN 500-600



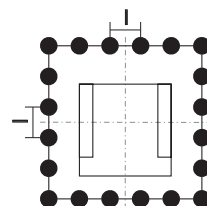
DN 100-200



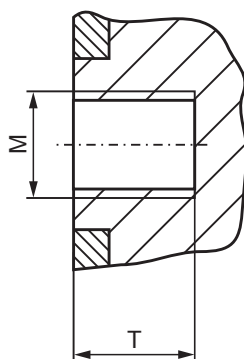
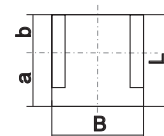
DN 250-300



DN 400



DN 500-600



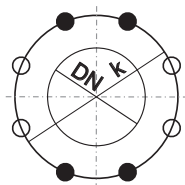
- Z = total number of holes
- Z1 = number of joint-holes
- Z2 = number of through-going bores
- T = usable depth of thread

DN [mm]	K [mm]	Z	M	T [mm]	Z1	Z2	l [mm]	w [°]	L [mm]	B [mm]	a [mm]	b [mm]
100	180	8	M16	13	4	4			117	121	67	50
150	240	8	M20	18	4	4			163	169	88	75
200	295	8	M20	20	4	4			217	218	117	100
250	350	12 resp. 8	M20	22	8 resp. 4	4			267	273	142	125
300	400	12 resp. 8	M20	22	8 resp. 4	4			317	335	167	150
400	515	16	M24	24	12	4	170	11.25	418	439	218	200
500	620	20	M24	34	20	0	121		520	540	270	250
600	725	20	M27	35	20	0	143		627	642	327	300

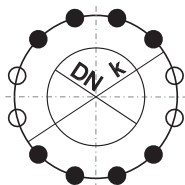
Flange bores for LOHSE NAQ valves with UNC thread

Inlet side
according ANSI B16.5 Class 150:

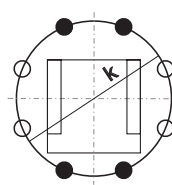
Outlet side
according Standard



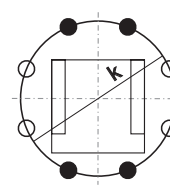
DN 100-200
(4"-8")



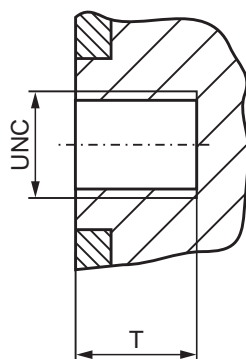
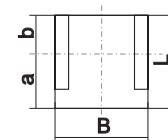
DN 250
(10")



DN 100-200
(4"-8")



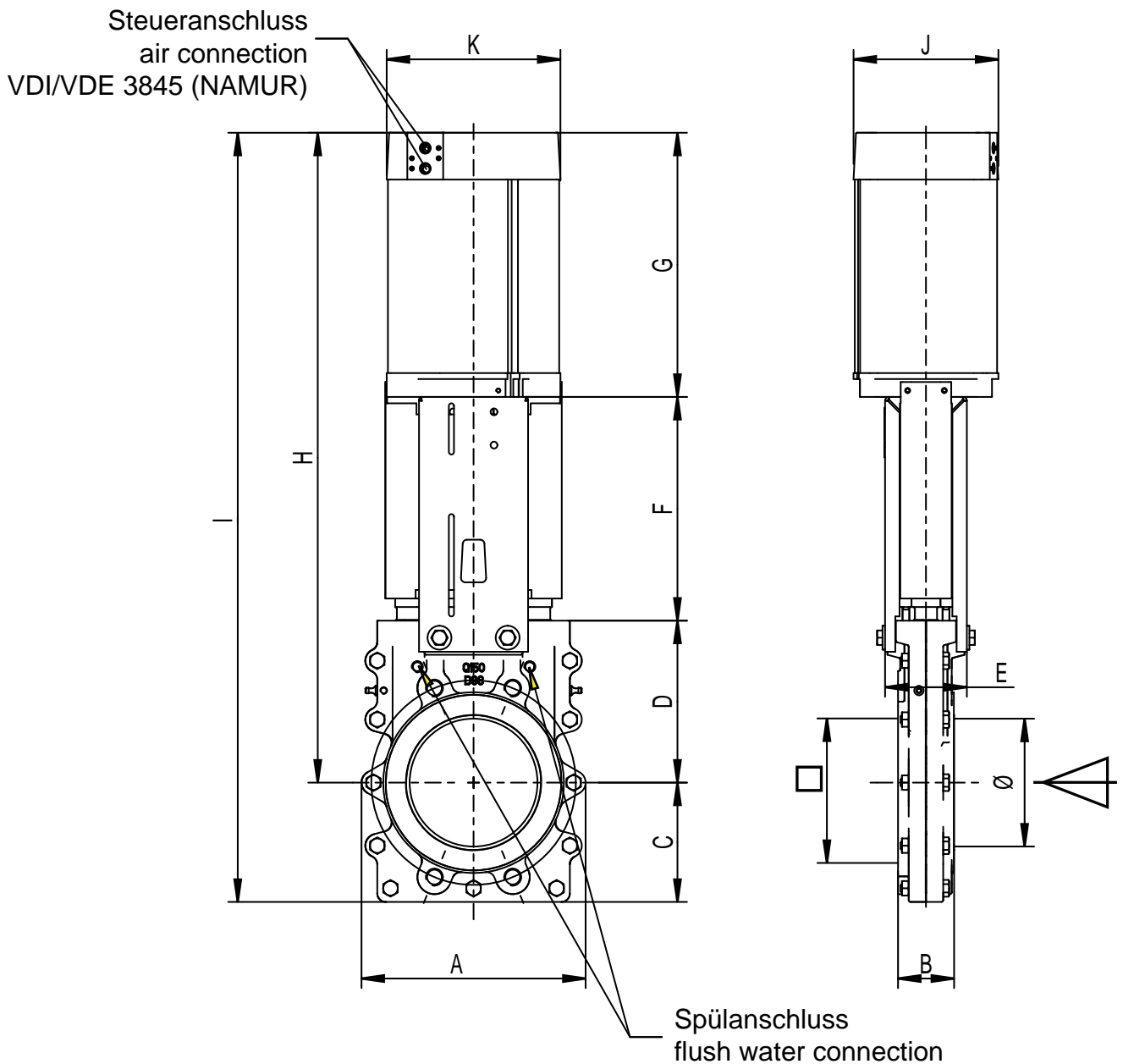
DN 250
(10")



- Z = total number of holes
- Z1 = number of joint-holes
- Z2 = number of through-going bores
- T = usable depth of thread

DN [mm]	DN [inch]	K [inch]	Z	UNC [inch]	T [inch]	Z1	Z2	L [mm]	B [mm]	a [mm]	b [mm]
100	3 1/2	7	8	3/4	1/2	4	4	117	121	67	50
150	6	9 1/2	8	3/4	11/16	4	4	163	169	88	75
200	8	11 3/4	8	3/4	3/4	4	4	217	218	117	100
250	10	14 1/4	12 resp. 8	7/8	7/8	8 resp. 4	4	267	273	142	125

Reject-valve
 circular inlet, square outlet
 pneumatic cylinder and protection guard



DN	PS [bar]	A	B	C	D	E	F	G	H	I	J	K	Zyl Ø	air connection	flush water connection	weight ~[kg]
150	8	263	66	140	190	96	263	310	763	903	178	190	160	G 1/4"	G 1/4"	41.4
200	8	325	66	160	225	120	310	388	923	1083	215	244	200	G 1/2"	G 1/2"	56.5
250	8	350	78	195	270	120	362	433	1065	1260	215	244	200	G 1/2"	G 1/2"	82

Dimensions in mm, flange bores on request; air connection acc. VDI/VDE 3845 (NAMUR).
 Further sizes on request.

Germany + Switzerland

MARTIN LOHSE GmbH
Unteres Paradies 63
89522 Heidenheim
Phone: +49 7321 755-0
sales@lohse-gmbh.de
www.lohse-gmbh.de

Australia, New Zealand, Indonesia, Singapore, Malaysia

P.T. VOITH PAPER
Jl. Permata V Lot EE - 1
Kawasan Industri KIIC
Karawang 41361, INDONESIA
Phone : +62 267 419 719
Fax : +62 267 419 717

Austria (Papier- + Zellstoffindustrie, Abwasser + Kläranlagen) + CZ, SK, SLO, SRB, HR, H

Peter Rejter
Handel Mazzetti-Str. 85
3100 St. Pölten
Phone: +43 2742 77366
Fax: +43 2742 77366
office@industriearmaturen.at

Austria

Klinger Gebetsroither GmbH & Co KG

Am Kanal 8-10
2352 Gumpoldskirchen
Phone: +43 2252 60 71 00 3029
Fax: +43 2252 60 71 00 3010
gerhard.praxmarer@gebetsroither.at
www.gebetsroither.at

Belgium

Hanwel Belgium N.V.
Winninglaan 15
9140 Temse
Phone: +32 3 7110353
Fax: + 32 3 7110579
info@hanwel.be
www.hanwel.be

Chile

INTERTECH
Prat 116, Of 31
Curicó, Chile
phone +56.075.322033
www.inter-tech.cl
n.flores@inter-tech.cl

People's Rep. Of China

Shanghai Fier Mechanical Co. LTD
Room B4, 15/F HuaFu Bldg.
No. 585 LongHua xi Rd.
ShangHai, China 200232
Phone: +86 21 54591038
Fax: +86 21 54240616
MP: 13611665381
shfier@163.com
www.fier.com.cn

Denmark

Uni-Valve A/S
Sydvestvej 138 – 140
2600 Glostrup
Phone: +45 43 438200
Fax: +45 43 437475
mail@uni-valve.com
www.uni-valve.com

Finland

KLINGER Finland Oy
Tinankuja 3
02430 Masala
Phone: +358 10 4001011
info@klinger.fi
www.klinger.fi

France, MA, TN, DZ

T.N.P.
30 Boussegré
58140 Lormes
Phone: +33 1 559711-11
Fax: +33 1 48835207
contact@tnp.fr
www.tnp.fr

Great Britain

Voith Turbo Ltd.
6 Beddington Farm Road
Croydon, Surrey CRO, 4XB
Phone: +44 208 6673013
Fax: +44 208 6670403
matthew.healy@voith.com

Greece

Niko Mikopoulos, BSc.
Metron Str. 28
17123 Nea Smyrni-Athens
Phone: +30 6 98 305 10 70
n.mikopoulos@nm-bc.com

India

Antrieb Technik Private Limited
59 (old 359) Sidco Industrial Estate
Ambattur
Chennai-600 098
Tamilnadu / INDIA
Phone: +91 44 262-58303
Fax: +91 44 2819-3718
antrieb.technik@gmail.com

Israel

P.B.A Wiesner Agencies Ltd.
P. O. Box 4622
Petach-Tikva 49277
Phone: +972 3 9052111
Fax: +972 3 9052110
ofra@pba.co.il

Italy

Techno Paper S.R.L.
Viale Certosa 269
20151 Milano (MI)
Phone: +39 02 78627750
Fax: +39 02 45471638
info@techno-paper.com
www.techno-paper.com

Japan

Voith IHI Paper Technology Co.Ltd.
River City M-SQUARE 7F
2-1-6 Tsukuda, Chuo-ku
1040051 Tokyo
Phone: +81 3 6221 3108
Fax: +81 3 6221 3126

Korea

C.S-Automation Co., Ltd. (Customer Satisfaction Automation)
#804 Sejung Technovalley
279-5 Songjeong-Dong
Heungdeok-Gu
Cheongju-Si
South Korea. 361-290
Phone: +82 43 276 1332
Fax: +82 43 278 1332
changseol@korea.com

Netherlands

Hanwel B. V.
Jan Tinbergenstraat 209
7559 SP Hengelo
The Netherlands
Phone: +31 74 2650000
Fax: +31 74 2650001
verkoop@hanwel.com
www.hanwel.com

Norway

KS Norge AS
Holtbråtveien 69
1449 Drøbak
Phone: +47 917 19995
firmapost@ksb.com
www.ksb.com/en-no

Philippines

R. Dan and Co., Inc.
Lot 6-9 Block 5 Greenway Business
Park
Bulihan, Silang,
Cavite Philippines 4118
Phone: +63 960 690 0244
ester.poe@robertdan.com.ph
www.robertdan.com.ph

Poland

Waldemar Kulicki
ul. Heweliusza 37/4
87-148 Papowo Toruńskie
Phone: +48 509 46 64 25
waldemar-kulicki@wp.pl
www.wkulicki.eu

Rep. of South Africa

Voith Turbo (Pty) Ltd
P.O. Box 13171
Witfield, 1467
Gauteng, SOUTH AFRICA
Phone: +27 11 418 4000
Fax: +27 11 418 4080
info.vtza@voith.com
www.rsa.voithturbo.com

Spain, Portugal

CELPAP EQUIPOS, S.L.
C/Amposta, 14-18
08174 Sant Cugat del Vallés
(Barcelona)
Phone +34 93 415 18 75
celpap@celpap.com
www.celpap.com

Sweden

PA-Ventiler AB
Sagbäcksvägen 3B
43736 Lindome
Phone: +46 31 992500
Fax: +46 31 992503
info@paventiler.se
www.paventiler.se

Switzerland

dampfEXPERTE GmbH
Häsiweg 33
5018 Erlinsbach
Phone: +41 62 5448090
roger.fehr@dampfexperte.ch
www.dampfexperte.ch

Taiwan

E-Chen Engineering Co., Ltd.
3F-3, No. 151, Sec. 4,
Hsin-Yi Road,
Taipei, Taiwan, R.O.C.
Phone: +886 22 7056185
Fax: +886 22 7045967
echen123@ms15.hinet.net

Thailand

Weston Myer Ltd.
8 Soi Seri-Thai 58
Seri-Thai Road
10510 Minburi Bangkok
Phone: +66 2 3745869
Fax: +66 2 375-1179
comm1@westonmyer.com

Turkey

Sanrep Kağıt San. ve Tic. Ltd. Şti.
Altiyol, Kuşdili Caddesi No:19/7
H.Fazlıoğlu İş Merkezi
34714 Kadıköy – İSTANBUL
Phone: +90 216 345 40 48
Fax: +90 216 330 73 12
sanrep@sanrep.com
www.sanrep.com

USA, Canada, Mexico

Voith Paper Inc.
2200 N. Roemer Rd.
Appleton, WI 54912-2237
Phone: +1 920 – 358 – 2396
Fax: +1 920 – 731 – 5126
VPAWSpareParts@voith.com